

GREATER SASKATOON CATHOLIC BOARD OF EDUCATION

SPECIAL MEETING OF THE BOARD

**Wednesday, September 9, 2009 – 7:00 P.M.
Board Room**

AGENDA

1. Call to Order - D. Boyko
2. Opening Prayer - Trustee Stus
3. Adoption of the Agenda
4. Discussion/Decision
 - 4.1 St. Mary Community School Concept Plan
5. Closing Prayer -Trustee Stus
6. Adjournment and Sign of Peace

8. Discussion/Decision

8.1 St. Mary Community School Concept Plan

Board Priority:

- Building Relationships and Partnerships
- Promoting Stewardship

Presented by: Director of Education B. Hanson, Superintendents D. Lloyd and G. Martell

A. Background Information:

The Board will recall that in December, 2008 the Preliminary Concept Plan for St. Mary Community School was approved which is appended on pages three and four of this report. The Plan was then forwarded to the Ministry of Education for their review and approval based on an opening enrolment of 352 students and a core capacity of 430. The Ministry was required to sign off on the "enhancements" which include larger allowances for Daycare and Pre-K and Kindergarten, providing a gross floor area SA-1 allowance (exclusive of walking track, future 'shell' components, and related walls and circulation) of approximately 5,430m² which is well above the current design area of 3,000 m² at Mother Teresa, Father Robinson and Saint Luke elementary schools. As part of the concept plan it was noted that the Ministry requires that 40% of the general instruction classrooms are to be modular (based on the core area enrolment) and that all new school construction including modular construction was required to meet the "Silver" requirement of the Leadership in Energy and Environmental Design (LEED) Green Building Rating System.

B. Current Developments:

In April, 2009 we were notified that the Ministry had reviewed the enrolment projections supplied by the school division and after taking into consideration that condo style housing renewal would be part of the neighbourhood redevelopment, the Ministry had revised the enrolments it is prepared to support for the new school. The Ministry adjusted its enrolment projection to an opening Pre-K to Grade 8 enrolment of 300 students and a core enrolment of 375. An SA-1 showing a revised total area of 4,185m² based on that enrolment was provided for our records. An additional 258m², including circulation and walls, was added to accommodate two classes of Kindergarten and Pre-K students and an

additional 315m², including walls and circulation, was added for child care. This brought the total area, supported by the Ministry, to 4,779m² with 40% of the general instruction classrooms as relocatable construction.

In June, 2009 a meeting was held with the Ministry to clarify assumptions regarding student enrolment and the demographics and characteristics of the Pleasant Hill Redevelopment Plan. It was strongly noted by administration that condo style housing was not reflective of the affordable housing initiative identified in the Pleasant Hill Redevelopment Plan and that further review of opening and core design enrolments was required.

In late July, 2009 administration was notified that the Ministry had again reviewed the enrolment projections for the new St. Mary Community School and had determined that the opening and core enrolments identified in their letter of April 21, 2009 were still relevant. The ministry confirmed that funding would be provided for the new school based on an opening enrolment of 300 students and a core designed for 375 students. The ministry would also consider approving additional space for multiply handicapped students, within the enrolment numbers, when the school division forwards documentation to support its request for the space. The general instruction space would remain at 40 % relocatable construction.

The Ministry outlined their requirement for cost breakouts for any proposed additional space being funded by other capital partners who would be required to pay for the entire cost of the space they wished to occupy in the building. In addition the space being built using one time capital donations from other corporations or businesses was to be broken out for review by the Ministry. To issue Stage 3 approval to move to detailed design the Ministry required confirmation by the school division in writing and agreeing to the opening enrolment of 300 students and a core designed for 375 students.

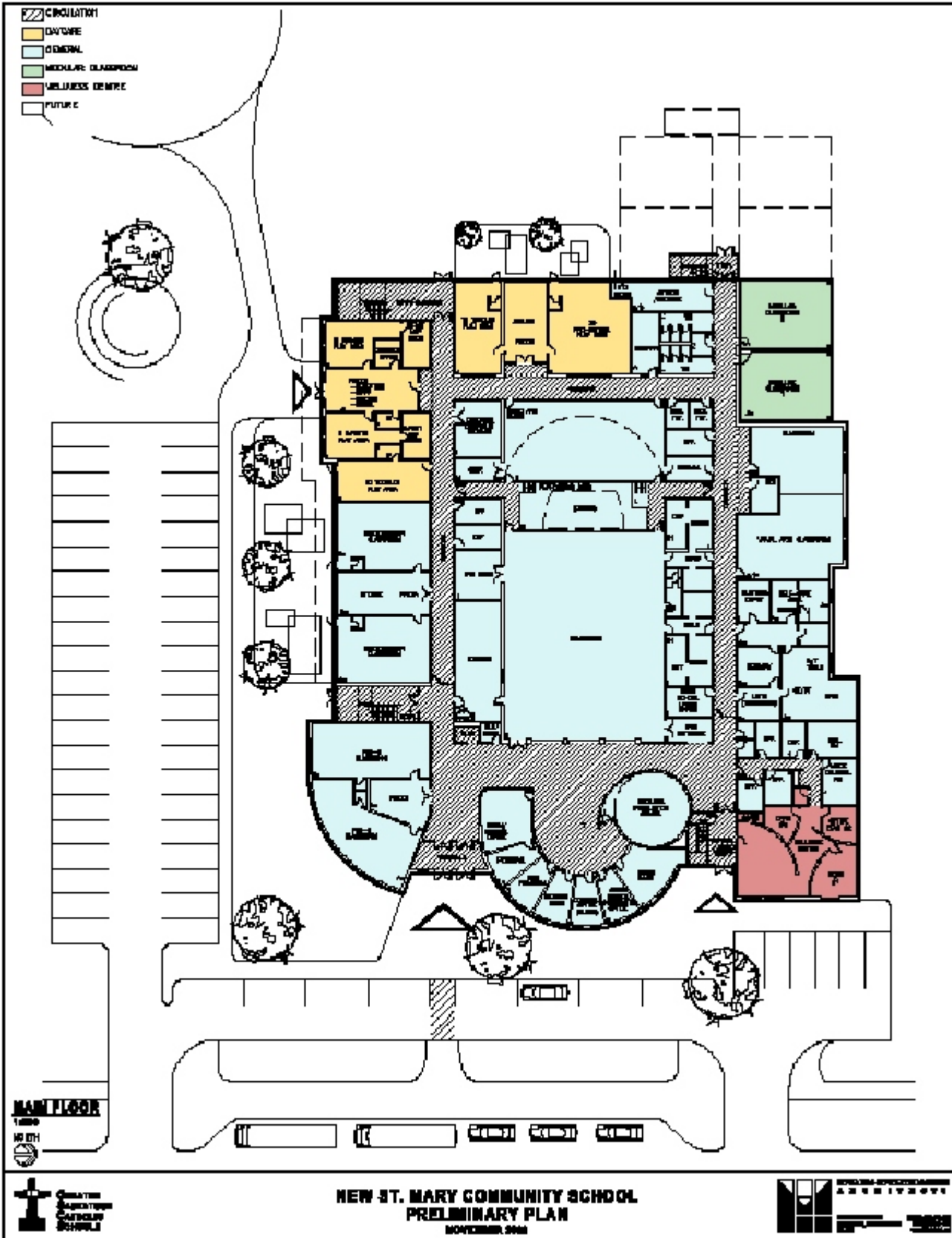
In August, 2009 the lead architect for the project reviewed the Preliminary Concept Plan submitted by the Board of Education and the final SA-1 approved by the Ministry in July, 2009. It was noted that the review was at an intermediate SA-1 level of about a dozen program categories. The significant shortages identified were the wellness component, community spaces, walking track, instruction support, counselling and opportunities for future partners. Administration reviewed with the Ministry the current and projected enrolment for St. Mary Community School to ensure that all factors resulting from the redevelopment of the Pleasant Hill Neighbourhood were considered in the opening and core enrolment identified by the Ministry. Administration was advised shortly thereafter that the opening enrolment would remain at 300 students and the core designed enrolment of 375 students as approved by the Ministry on July 30, 2009.

In September, 2009 a new concept plan for St. Mary Community School was completed. Through consultation with the Ministry the core components such as community spaces, the walking track, instruction support and counselling have been retained in the revised concept plan and are presented for review with the Board of Education on pages five, six and seven of this report.

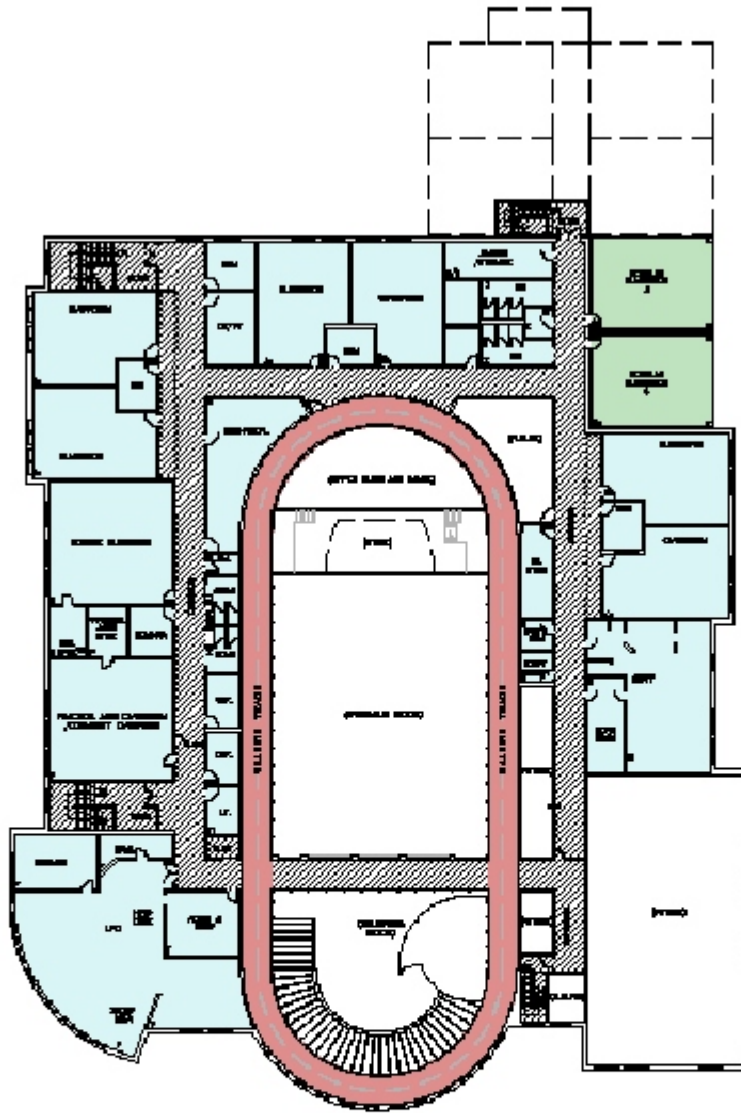
On September 8, 2009 administration was notified by the Ministry that the revised concept plan was approved to proceed to detailed design based on 4,900 m² inclusive of a recycling area with construction of the walking track with the cost to be borne by the Board of Education.

Recommendation:

That the Board of Education approve the revised concept plan for the construction of the new St. Mary Community School.



-  BRILLIANT
-  GYMNASIUM
-  GENERAL
-  MODULAR CLASSROOM
-  WELLNESS CENTRE
-  FUTURE



SECOND FLOOR
11-200



**NEW ST. MARY COMMUNITY SCHOOL
PRELIMINARY PLAN
NOVEMBER 2009**







202 Avenue B North
 Saskatoon, SK, Canada S7L 1E2
 Tel: (306) 343-6000 Fax: (306) 374-1661
 Email: eema@sasktel.net

EDWARDS EDWARDS McEWEN
A R C H I T E C T S

September 3, 2009

5411

New St. Mary Community School SA-1 and Revised Concept Plan Comparison			
General SA-1 Area Category	December, 2008 5430+ m² SA-1	September, 2009 4779 m² SA-1	September, 2009 Revised Concept Plan
General Instruction	1236	1051	1083
Instruction Support	407	270	271
Science Labs	115	101	100
Resource Centre	296	270	273
Physical Activity	459	400	400
Program Arts	426	371	352
Program Flex Space	0	0	0
Administration	263	231	219
Community and Daycare	632	692	733
Building Service	373	302	243
Circulation and Walls	1220	1070	1215
Recycling Room	0	21	0
Net	5427 m²	4779 m²	4889 m²
Shell, Future Partners	411	0	0
Track	320	0	299
Related Circulation and Walls	477	0	0
Total	6635 m²	4779 m²	5188 m²

WILLIAM A. EDWARDS DAVID C. EDWARDS JAMES E. McEWEN BLAIR A. McDOUGALL
 BES M/Arch SAA MRAIC BES M/Arch SAA JIA Assoc. BES B.Arch SAA MRAIC LEED^{ac} A.E.T.